

The UNIBLITZ® VS14 and VS25 shutter series have been designed to give accurate, repeatable exposures for a wide variety of applications. They have been successfully field tested in microscopy, video imaging, PMT protection, and photographic applications worldwide.

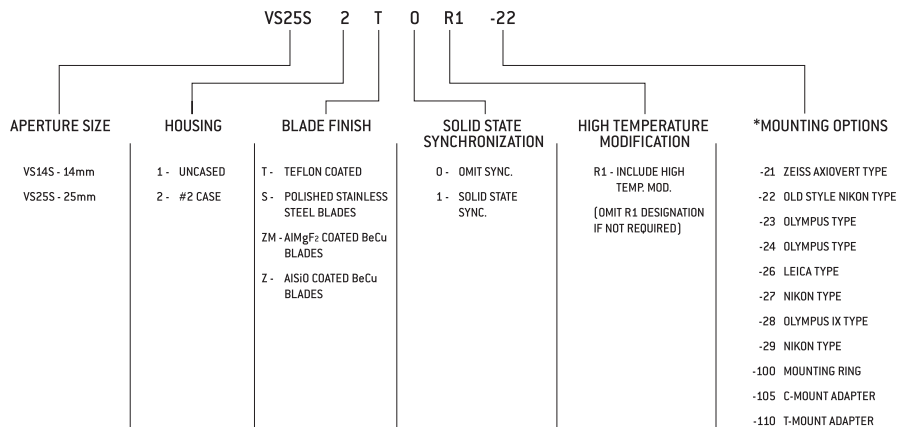
Available with either 14mm or 25mm apertures, these shutters are offered in either cased or uncased configurations. The uncased shutter allows a high degree of flexibility when mounting the unit in situations inaccessible to most shutters due to spatial limitations. The cased version of this series is very popular due to the protection the black anodized aluminum housing provides the precision shutter mechanism. To further enhance the adaptability of this series, we offer several customized mounts and mounting systems for popular microscopes and video imaging applications. For those applications where the shutter will be used to switch a mercury arc lamp, we strongly recommend the "R1" enhancement. This modification will allow the shutter to operate under the intense heat produced by mercury lamps. Additional information can be found in the specific data sheet entitled "MICROSCOPE & VIDEO MOUNTING SYSTEMS."

FEATURES

- Two aperture sizes available
 - 14mm diameter - Model VS14
 - 25mm diameter - Model VS25
- Laser energy ratings up to 10W/mm²
- Exposure repetition rates from DC - 40Hz
- Solid state synchronization available
- Cased and uncased versions available

HOW TO ORDER

VS14/VS25 Series Shutters Part Numbering System



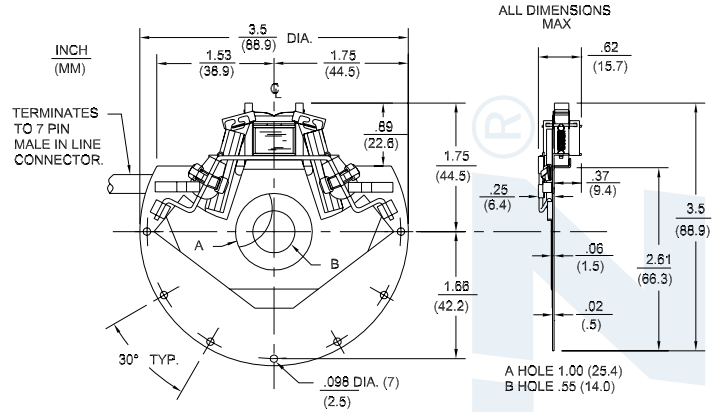
* SEE "MICROSCOPE AND VIDEO MOUNTING SYSTEMS" DATA SHEET FOR ADDITIONAL INFORMATION AND OUTLINE DRAWINGS (MUST BE ORDERED WITH #2 HOUSING OPTION).

For additional Timing and Operational information, see "Shutter Products-General Specification Sheet." See VS14/VS25 shutter outline drawings shown on page 2 of this specification sheet.



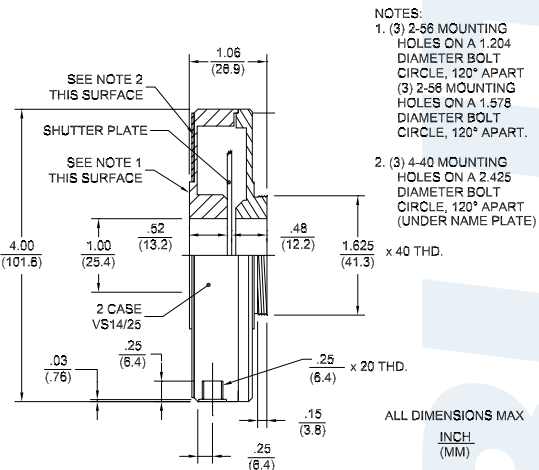
#2 UNCASED STYLE

(Figure 1) The VS14/25 uncase style is the basic configuration of this series and is best suited for OEM applications. Mounting can be accomplished through seven 2.5mm holes around the unit's outer perimeter. The unit terminates to a 7-pin male in-line connector through a six-inch cable assembly.



#2 CASED STYLE

(Figure 2) The VS14/25 #2 case style allows a number of mounting configurations. A 1/4-20 threaded hole is provided for post mounting. The 1.625in x 40TPI external thread, rear side, and the six 2-56 threaded holes, front side (Figure 3), can be interfaced directly into your application or fitted with variety of specific mounting options. See "MICROSCOPE & VIDEO MOUNTING SYSTEMS" data sheets for additional information. The unit terminates with a 7-pin male connector.



CASE/CONNECTOR LAYOUT

(Figure 3) This drawing illustrates 7-pin connector and 1/4-20 threaded hole layout for the VS14/25 series #2 case style.

