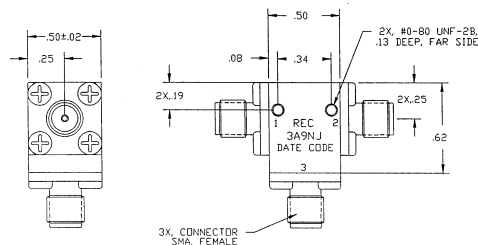
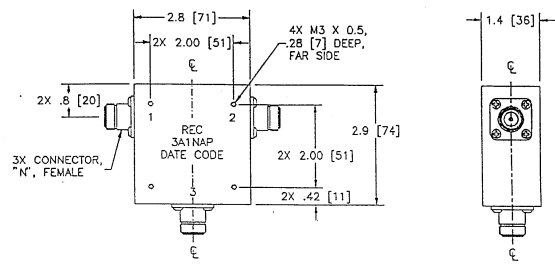
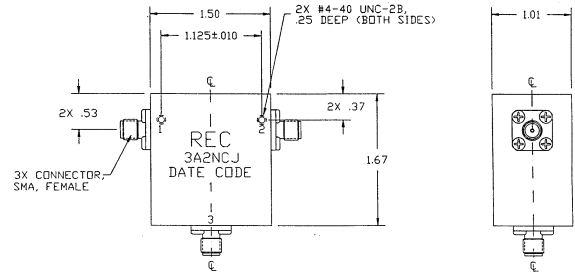
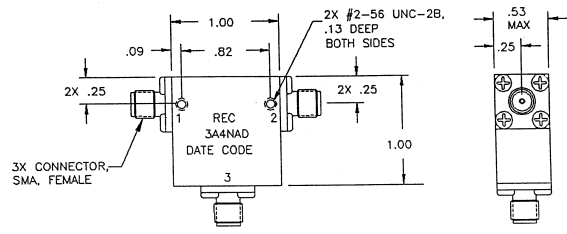
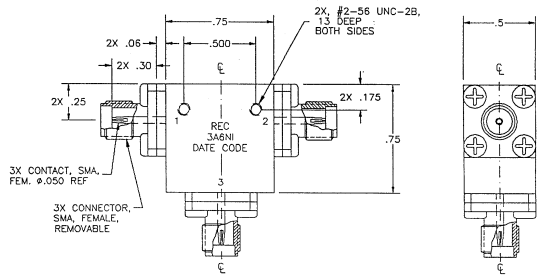


COAXIAL CIRCULATORS

FREQUENCY GHz	ISOLATION dB, MIN	INSERTION LOSS dB, MAX	VSWR MAX	POWER WATTS	MODEL #	DIMENSIONS IN INCHES
0.133 - 0.140	23	0.500	1.120:1	50	3A1NAP	2.900 X 2.800 X 1.400
0.175 - 0.200	17	0.500	1.350:1	300	3A1NW	2.900 X 2.800 X 1.400
0.157 - 0.163	20	0.500	1.250:1	500	3A1NBD	2.900 X 2.800 X 1.400
0.160 - 1.650	20	0.500	1.250:1	125	3A1NAS	2.900 X 2.800 X 1.400
0.168 - 0.170	30	0.400	1.200:1	300	3A1NU	2.900 X 2.800 X 1.400
0.169 - 0.207	18	0.070	1.250:1	50	3A1NJ	2.900 X 2.800 X 1.400
0.190 - 0.220	17	0.500	1.350:1	300	3A1NX	2.900 X 2.800 X 1.400
0.225 - 0.260	15	0.700	1.350:1	20	3A1NAD	2.900 X 2.800 X 1.400
0.250 - 0.270	20	0.400	1.200:1	100	3A1NAB	2.900 X 2.800 X 1.400
0.250 - 0.300	17	0.700	1.350:1	20	3A1NAZ	2.900 X 2.800 X 1.400
0.310 - 0.400	14	0.500	1.500:1	150	3A1NAY	2.900 X 2.800 X 1.400
0.406 - 0.450	18	0.600	1.250:1	20	3A2NCJ	1.500 X 1.670 X 1.010
0.450 - 0.470	20	0.500	1.250:1	20	3A2NAAF	1.500 X 1.670 X 1.010
0.470 - 0.580	18	0.600	1.300:1	200	3A2NAJ	2.900 X 2.800 X 1.400
0.570 - 0.710	18	0.600	1.300:1	200	3A2NAI	2.900 X 2.800 X 1.400
0.700 - 0.860	18	0.600	1.300:1	200	3A2NAH	2.900 X 2.800 X 1.400
0.700 - 0.950	15	0.700	1.600:1	150	3A2NCP	1.500 X 1.670 X 1.010
0.800 - 1.000	18	0.400	1.300:1	40	3A2NCR	1.375 X 1.375 X 0.500
1.000 - 1.100	22	0.300	1.250:1	50	3A2NDU	1.500 X 1.670 X 1.010
1.000 - 1.320	17	0.600	1.350:1	50	3A3NAS	1.500 X 1.670 X 1.010
1.250 - 1.400	20	0.400	1.250:1	300	3A3NH	1.500 X 1.670 X 1.010
1.400 - 1.600	20	0.500	1.250:1	50	3A3NAC	1.500 X 1.670 X 1.010
1.610 - 1.660	25	0.200	1.180:1	150	3A3NAA	1.500 X 1.670 X 1.010
1.700 - 2.000	20	0.300	1.250:1	400	3A4NAK	1.500 X 1.670 X 1.010
2.000 - 2.300	23	0.350	1.200:1	10	3A4NN	1.500 X 1.670 X 1.010
2.300 - 2.500	22	0.300	1.250:1	400	3A4NO	1.250 X 1.250 X 1.010
2.300 - 2.700	20	0.500	1.250:1	50	3A4NAD	1.000 X 1.000 X 0.530
2.700 - 2.900	18	0.500	1.300:1	50	3A5NG	1.000 X 1.000 X 0.530
2.800 - 3.100	22	0.300	1.180:1	150	3A5NQ	1.000 X 1.000 X 0.500
3.100 - 3.500	22	0.300	1.180:1	150	3A5NC	1.000 X 1.000 X 0.500
3.600 - 4.200	20	0.300	1.200:1	20	3A5NE	1.625 X 0.750 X 0.500
4.200 - 4.700	20	0.300	1.200:1	40	3A6NF	1.000 X 0.950 X 0.500
4.750 - 5.250	20	0.400	1.250:1	50	3A6NK	1.000 X 0.950 X 0.500
5.100 - 5.900	20	0.200	1.220:1	30	3A6NI	0.750 X 0.750 X 0.500
5.925 - 6.875	20	0.350	1.300:1	100	3A7NIL	0.750 X 0.750 X 0.500
6.400 - 7.800	20	0.400	1.250:1	5	3A7NQ	0.750 X 0.750 X 0.500
6.900 - 8.700	18	0.500	1.300:1	100	3A7ND	0.750 X 0.750 X 0.500
8.500 - 11.000	23	0.300	1.500:1	20	3A8NRL	0.500 X 0.620 X 0.500
10.550 - 11.750	23	0.350	1.150:1	100	3A8NW	0.750 X 0.750 X 0.500
12.700 - 13.300	20	0.350	1.200:1	5	3A9NK	0.500 X 0.620 X 0.500
13.000 - 13.500	23	0.500	1.150:1	5	3A9NJ	0.500 X 0.620 X 0.500
15.000 - 18.000	20	0.500	1.200:1	30	3A9NC	0.500 X 0.620 X 0.500

TYPICAL PACKAGE DIMENSIONS





NOTES:
1. METRIC DIMENSIONS ARE SHOWN IN BRACKETS